



AVAILABLE

3,100 SF Fully Equiped Restaurant
2,000 SF Bar/Lounge

John's Pass Village, Madeira Beach, Florida
(Tampa-St. Petersburg MSA)



111 Boardwalk Place W. Madeira Beach, FL 33708

- Fully equipped restaurant with bar and adjacent 2,000 SF Bar/Lounge—available together or separately.
- Outdoor seating with water views.
- Centrally located within John's Pass Village, a popular tourist destination in Tampa Bay area.
- Built in 2008; 3-story, 17,000 SF bldg
- Parking Spaces: 21 under bldg., plus nearby public parking and garage.

Call For Details



Frank A. Boulosa
Licensed Real Estate Broker
Tampa, Florida
frank@fabrealtygroup.com

(813) 789-6060



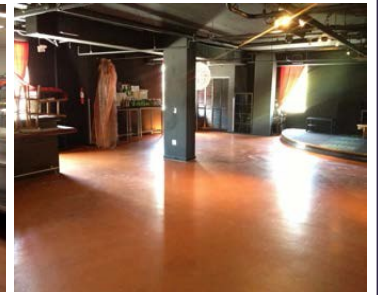
AVAILABLE

3,100 SF Fully Equiped Restaurant
2,000 SF Bar/Lounge

John's Pass Village, Madeira Beach, Florida
(Tampa-St. Petersburg MSA)



Unit #	Commercial	Unit SF
Unit 101	Retail: DD's Collectable's	1,540
Unit 103	Vacant Retail	930
Unit 201	Vacant Restaurant	3,085
Unit 203	Vacant Bar/Lounge	2,000
Sub-total Commercial		7,555



Frank A. Boulosa
Licensed Real Estate Broker
Tampa, Florida
frank@fabrealtygroup.com

(813) 789-6060